

When should I use the Law of Sines versus the Law of Cosines???

Law of Sines can be used in these cases:

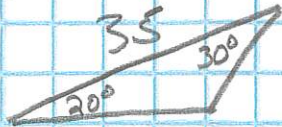
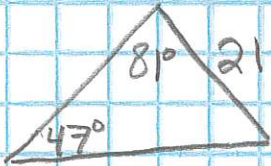
AAS, ASA, ASS

Example Triangles:

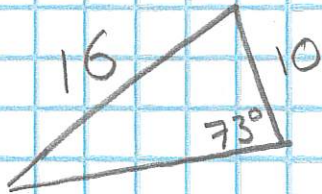
Non-Right Triangles!

Use the law of sines when the triangle has:

- 1) Two angles and a side given. AAS & ASA



- 2) Angle Side Side



Law of Cosines can be used in these cases:

SSS, SAS

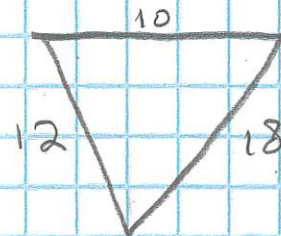
Example Triangles:

Non-Right Triangles

Use the law of cosines

When the triangle has:

- ① All 3 sides given
SSS



- ② Side Angle Side

