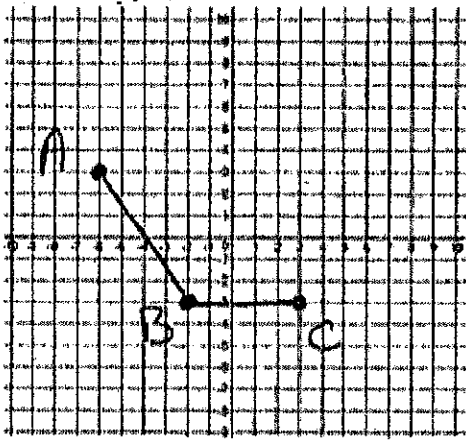


PC 1-6 (Transformations Exploration 2)

The graph of $f(x)$ is shown below:

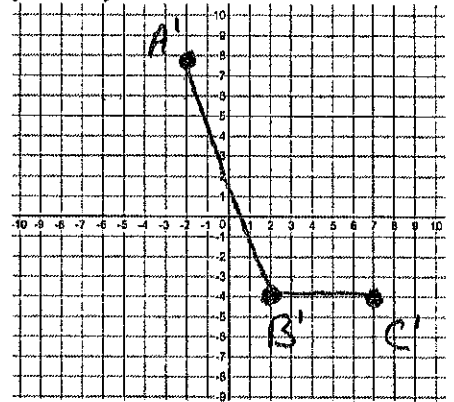


- A(-6, 3)
- B(-2, -3)
- C(3, -3)

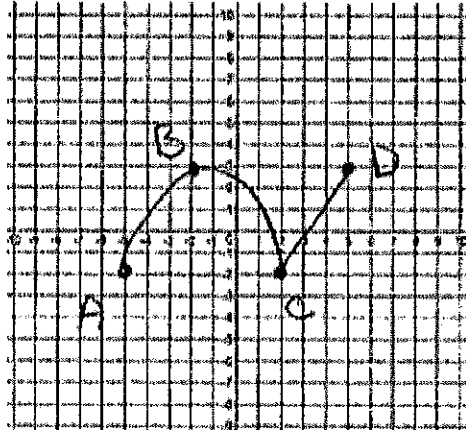
Using the graph of $f(x)$, graph:

$$2f(x - 4) + 2$$

- Multiply y by 2
- Move right 4
- Move up 2



The graph of $g(x)$ is shown below:

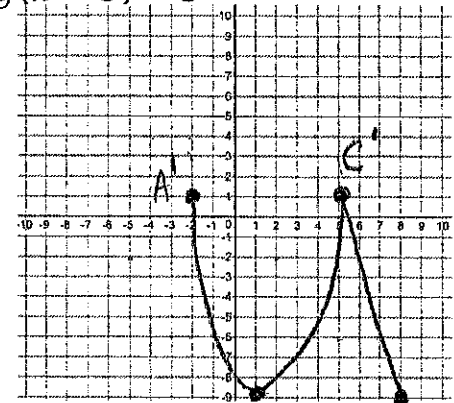


- A(-5, -2)
- B(-2, 3)
- C(2, -2)
- D(5, 3)

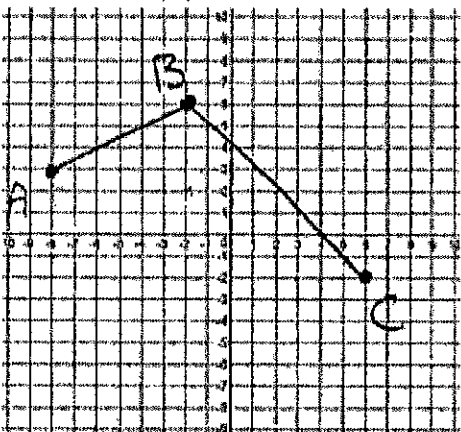
Using the graph of $g(x)$, graph

$$-2g(x - 3) - 3$$

- Multiply y by -2 .
- Move right 3
- Move down 3



The graph of $h(x)$ is shown below:

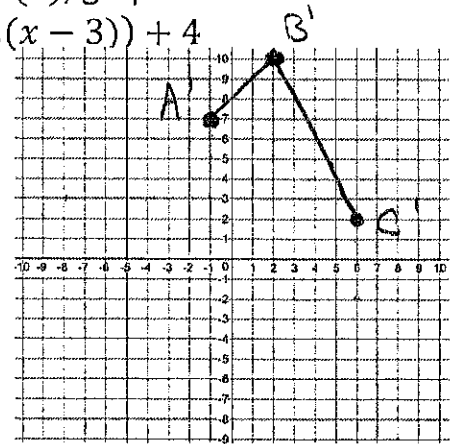


- A(-8, 3)
- B(-2, 6)
- C(6, -2)

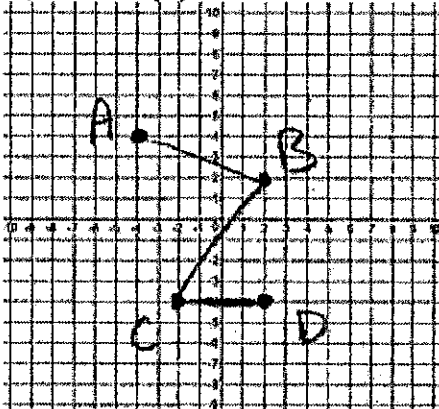
Using the graph of $h(x)$, graph

$$g(2(x - 3)) + 4$$

- Divide x by 2.
- Move right 3
- Move up 4



The graph of $m(x)$ is shown below:



- A(-4, 4)
- B(2, 2)
- C(-2, -4)
- D(2, -4)

Using the graph of $h(x)$, graph

$$m\left(-\frac{1}{2}(x + 1)\right) - 5$$

- Multiply x by -2
- Move left 1
- Move down 5

