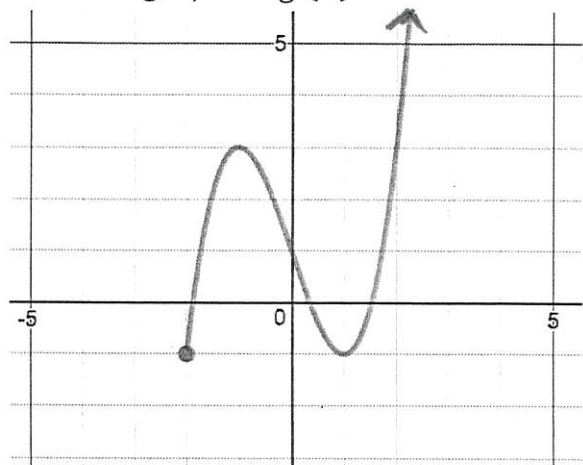


Guess the glue in by attempting the two problems below.

Below is the graph of $g(x)$



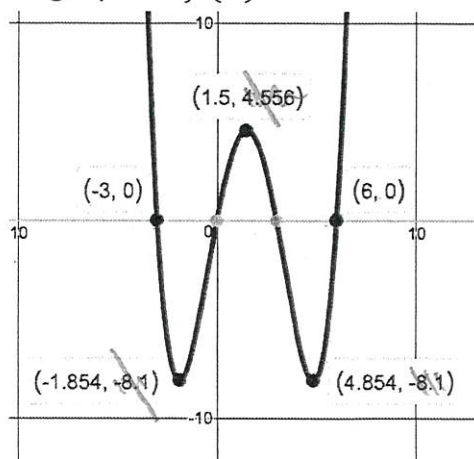
For what intervals is the graph of $g(x)$ increasing?

$$(-2, -1) \cup (1, \infty)$$

For what intervals is the graph of $g(x)$ decreasing?

$$(-1, 1)$$

Below is the graph of $f(x)$



For what intervals is the graph of $g(x)$ increasing?

$$(-1.854, 1.5) \cup (4.854, \infty)$$

For what intervals is the graph of $g(x)$ decreasing?

$$(\infty, -1.854) \cup (1.5, 4.854)$$